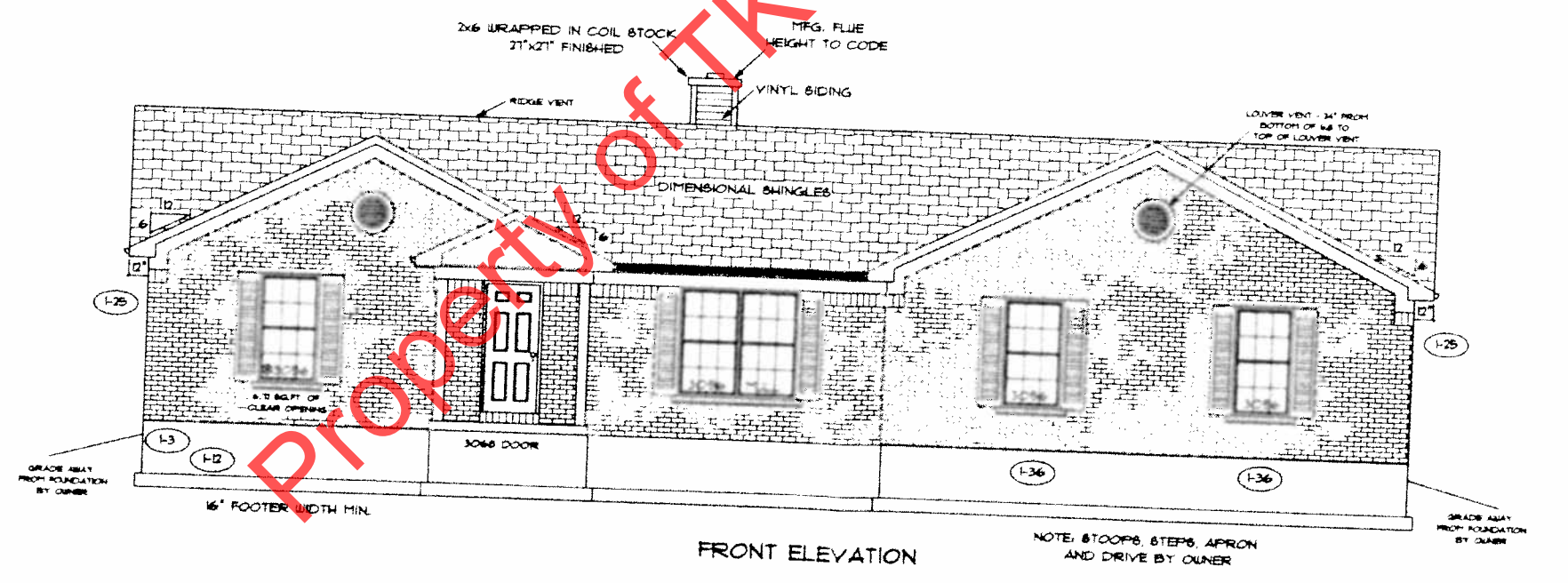
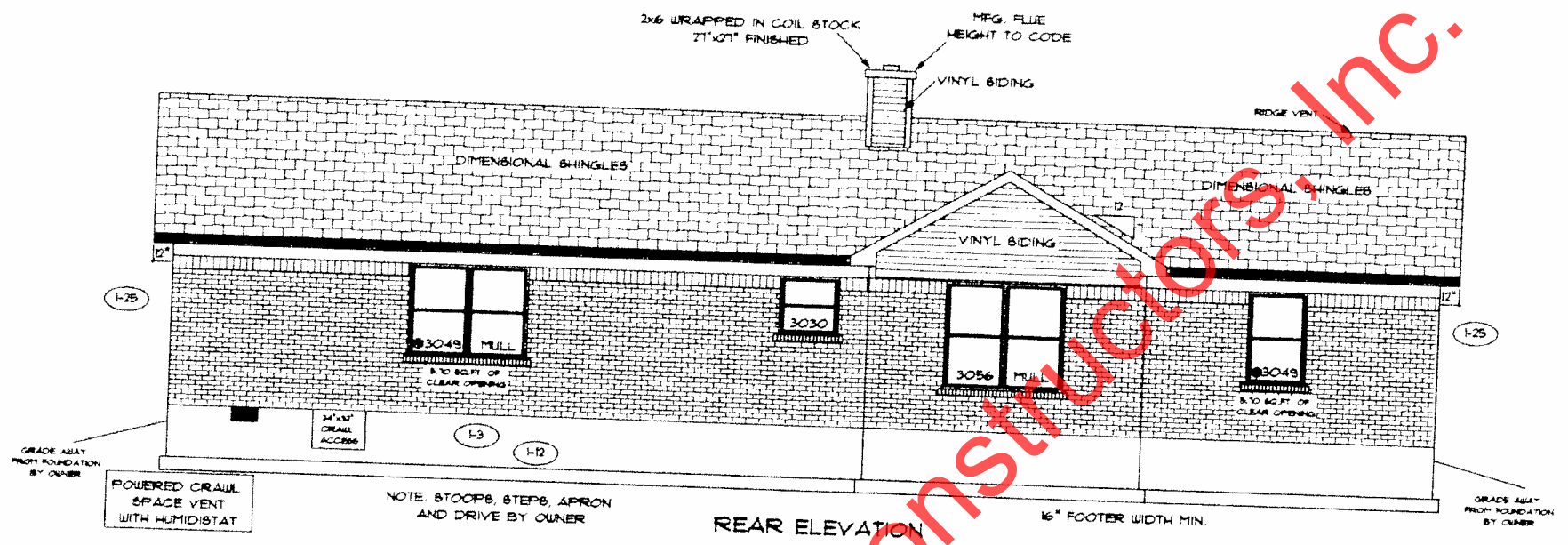


marked up 8-5-14



RDP
TRP

ADDENDUM I	PAGE NO. 10
VER: 09:17 AM	
DRAWING BY: RLC	
	1/8" = 1'
DATE: July 24, 2014	
JOB NO.: 210-14-0434	



TK CONSTRUCTORS
MEMPHIS

FLOOR PLAN

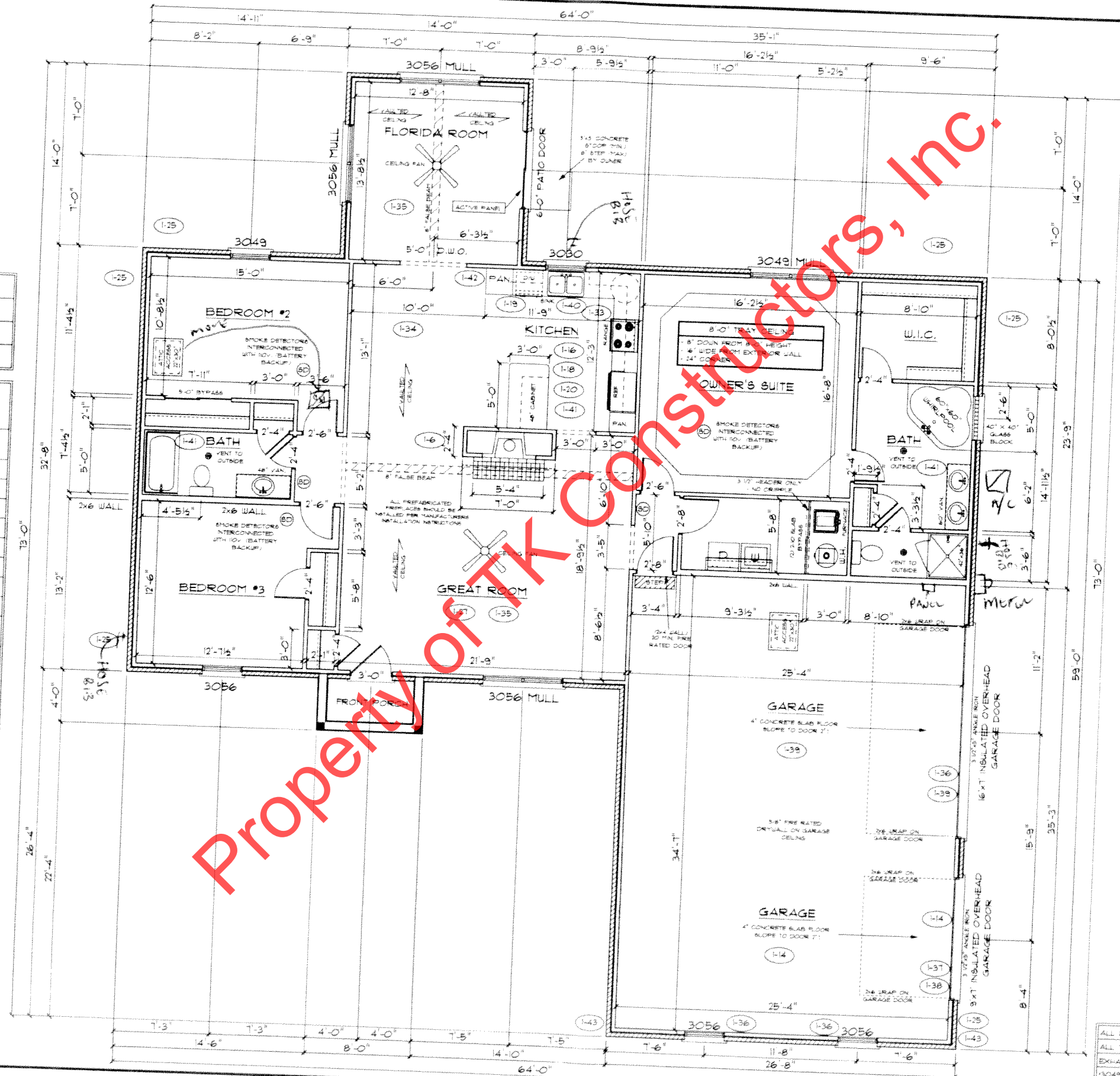
TOTAL LIVING SQ.FT.	2,055
GARAGE	840
TOTAL SQ.FT.	2995
EXCLUDING PORCH	32

ANDERSEN WINDOW SCHEDULE
- 200 SERIES -

ANDERSEN MODEL NO.	R.O. SIZE
3030	36" x 36"
3040	36" x 48"
3049*	36" x 51"
3056*	36" x 66"
3060*	36" x 72"
3049 MULL*	73" x 51"
3056 MULL*	73" x 66"
3060 MULL*	73" x 72"
ANDERSEN SLIDING DOOR R.O. 72 3/4" x 82 1/2"	
3'-0" FRONT DOOR R.O. 38 3/8" x 82 1/2"	
3'-0" FRONT DOOR WITH (1) SIDELITE R.O. 51 1/8" x 82 1/2"	
3'-0" FRONT DOOR WITH (2) SIDELITES R.O. 65 3/8" x 82 1/2"	
R.O. FOR BI-FOLD DOORS USING DRYWALL JAMB FACING • 1 1/4" • DOOR SIZE x (81 1/2")	
R.O. FOR BYPASS DOORS USING DRYWALL JAMB FACING MAKE SAME AS BOTH DOORS ADDED TOGETHER	
ALL INTERIOR DOORS SIZE • 2" TO WIDTH x 82 1/2" HIGH	
R.O. POCKET DOOR (2x DOOR WIDTH • 1") x 88" HIGH	

* DENOTES OPENING MEETS
EGRESS REQUIREMENTS

RPD
PRP



ALL WALL DIMENSIONS ARE FACE TO FACE OF STUDS
ALL INTERIOR WALLS ARE 3/2" UNLESS NOTED
EXHAUST BATH FANS ARE VENTED TO OUTSIDE AIR
(3049 BASH IS 20 SQ. FT. OF CLEAR OPENING)
ALL BRICK LAYOUT MEASUREMENTS ARE 4"

TK CONSTRUCTORS
MEMPHIS

DATE: July 24, 2014
JOB NO.: 210-14-0434

ADDENDUM 1
VER: 09/18 AM
DRAWING BY: RLC
1/8" = 1'

PAGE NO.: **30**

TK CONSTRUCTORS