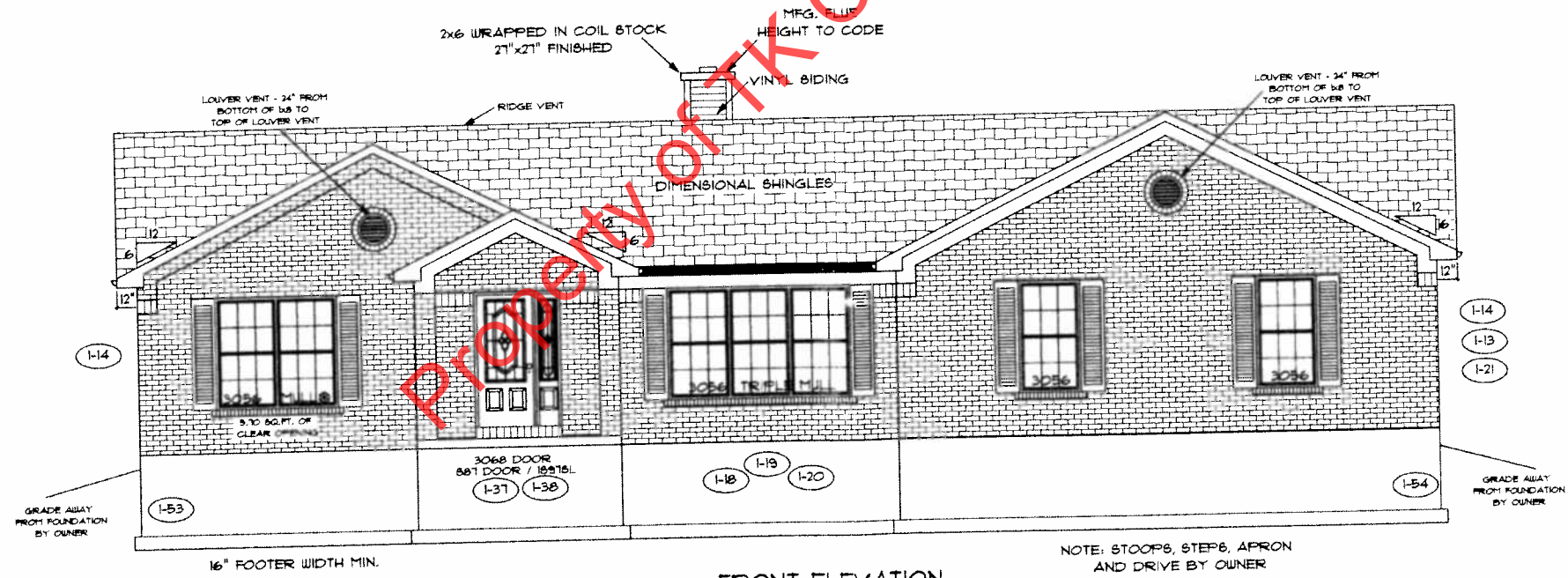


REAR ELEVATION

POWERED CRAWL SPACE VENT WITH HUMIDISTAT

NOTE: STOOPS, STEPS, APRON AND DRIVE BY OWNER

16" FOOTER WIDTH MIN.




FRONT ELEVATION

NOTE: STOOPS, STEPS, APRON AND DRIVE BY OWNER

16" FOOTER WIDTH MIN.

DRK JK

ADDENDUM I	PAGE NO.: 10
VER: 092112	
DRAWING BY: RLC	
1/8" = 1'	
 CONSTRUCTORS	
DATE: October 24, 2013	JOB NO.: 210-14-0323
TK CONSTRUCTORS MEMPHIS	

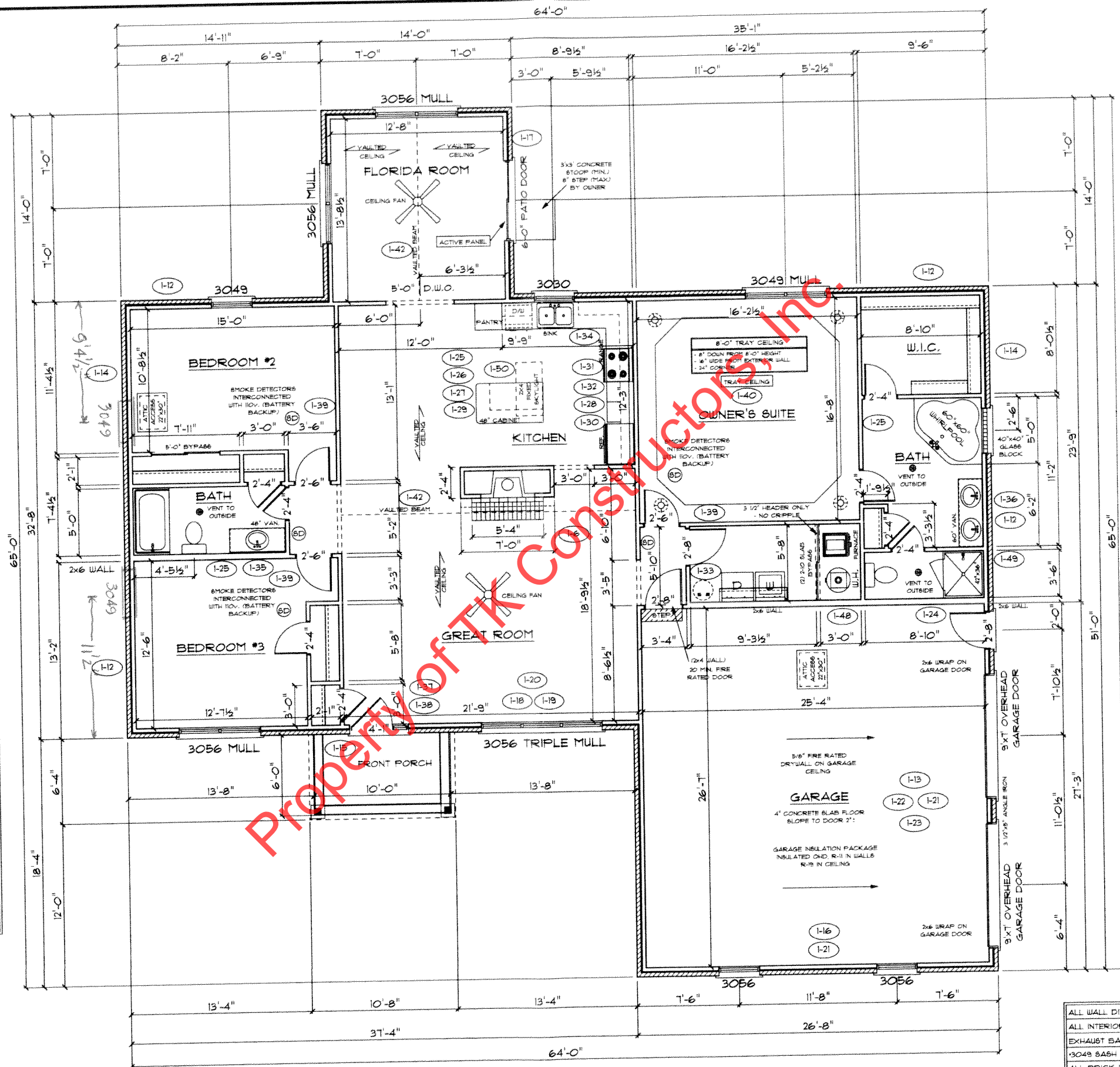
1-17 1-43 1-44
FLOOR PLAN

TOTAL LIVING SQ.FT.	2,055
GARAGE	726
TOTAL SQ.FT.	2781
EXCLUDING PORCH	60

ANDERSEN WINDOW SCHEDULE
- 200 SERIES -

ANDERSEN MODEL NO.	R.O. SIZE
3030	36" x 36"
3040	36" x 48"
3049*	36" x 57"
3056*	36" x 66"
3060*	36" x 72"
3049 MULL*	73" x 57"
3056 MULL*	73" x 66"
3060 MULL*	73" x 72"
ANDERSEN SLIDING DOOR R.O. T2 3/4" x 82 7/8"	
3'-0" FRONT DOOR R.O. 38 3/8" x 82 1/2"	
3'-0" FRONT DOOR WITH (1) SIDELITE R.O. 51 7/8" x 82 1/2"	
3'-0" FRONT DOOR WITH (2) SIDELITES R.O. 65 3/8" x 82 1/2"	
R.O. FOR BI-FOLD DOORS USING DRYWALL JAMB FACING + 1 1/4" + DOOR SIZE x (81 1/2")	
R.O. FOR BYPASS DOORS USING DRYWALL JAMB FACING MAKE SAME AS BOTH DOORS ADDED TOGETHER	
ALL INTERIOR DOORS SIZE + 2" TO WIDTH x 82 1/2" HIGH	
R.O. POCKET DOOR (2x DOOR WIDTH + 1") x 85" HIGH	

* - DENOTES OPENING MEETS
EGRESS REQUIREMENTS



ALL WALL DIMENSIONS ARE FACE TO FACE OF STUDS
ALL INTERIOR WALLS ARE 3 1/2" (UNLESS NOTED)
EXHAUST BATH FANS ARE VENTED TO OUTSIDE AIR
3049 SASH (5.10 SQ. FT. OF CLEAR OPENING)
ALL BRICK LAYOUT MEASUREMENTS ARE 4"

DKK Jgc