

DESIGN LOADS:
 ROOF LIVE LOADS • 25 P.S.F.
 FLOOR LIVE LOADS • 40 P.S.F.
 GROUND ENCL. LOADS • 25 P.S.F.
 WIND LOADS • WIND SPEED 115 MPH
 SOIL BEARING • 2500 P.S.F. (MEDIUM CLAY)

HEADERS
 - (1) 2X6 @ 12" O.C.
 - (2) 2X12 @ 6" O.C. BY P. #1
 - (2) 2X12 @ 12" O.C. BY P. #1

NOTE: STOOPS, STEPS, APRON AND DRIVE BY OWNER

FRONT ELEVATION

18" FOOTER WIDTH MIN. SIZE

Property of TK Constructors, Inc.

LOAD BEARING WINDOW AND DOOR HEADERS ON FIRST STORY TO BE (2) 2X10 STP

FIRESTOPPING WILL BE PROVIDED TO CUT OFF ALL CONCEALED DRAFT OPENINGS (VERT AND HORIZONTAL) TO FORM AN EFFECTIVE FIRE BARRIER BETWEEN STORIES AND ROOF

SMOKE DETECTORS TO BE INSTALLED IN ALL BEDROOMS AND ADJACENT AREA WITHIN 15' OF EACH BEDROOM, BASEMENT, AND FIRST STORY TO HAVE SMOKE DETECTORS - ALL SMOKE DETECTORS TO BE 10V, WITH BATTERY BACKUP AND INTERCONNECTED

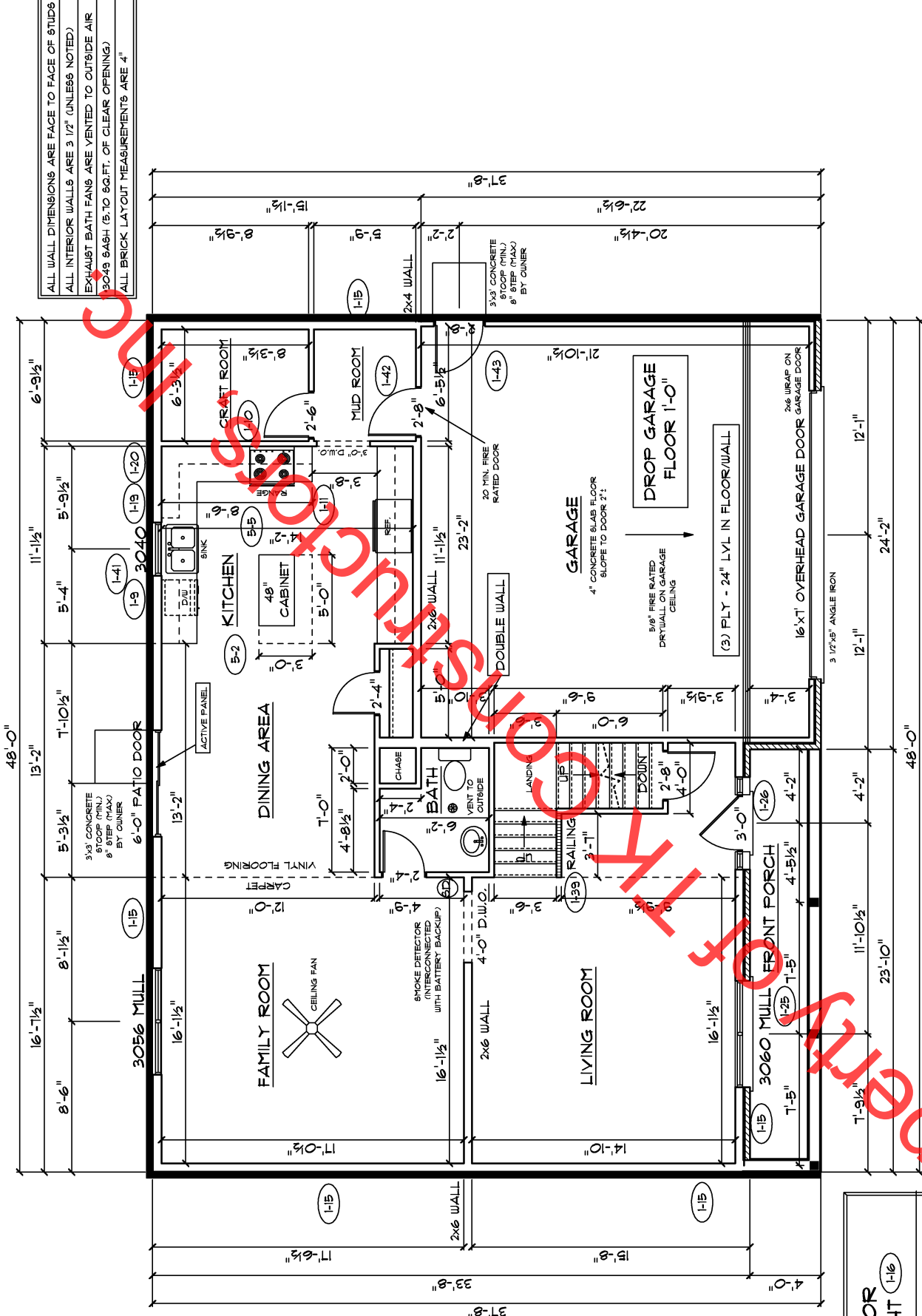
FIRST FLOOR PLAN

ANDERSEN WINDOW SCHEDULE

ANDERSEN MODEL NO.	R.O. SIZE
3030	36" x 36"
3040	36" x 48"
3049*	36" x 51"
3056*	36" x 66"
3060*	36" x 72"
3049 MULL*	73" x 51"
3056 MULL*	73" x 66"
3060 MULL*	73" x 72"
ANDERSEN SLIDING DOOR R.O. 12 3/4" x 82 1/8"	
3'-0" FRONT DOOR R.O. 38 3/8" x 82 1/2"	
3'-0" FRONT DOOR WITH (1) SIDELITE R.O. 51 7/8" x 82 1/2"	
3'-0" FRONT DOOR WITH (2) SIDELITES R.O. 65 3/8" x 82 1/2"	
R.O. FOR BIFOLD DOORS USING DRYWALL JAMB FACING = 1 1/4" + DOOR SIZE x (81 1/2")	
R.O. FOR BYPASS DOORS USING DRYWALL JAMB FACING MAKE SAME AS BOTH DOORS ADDED TOGETHER	
ALL INTERIOR DOORS SIZE + 2" TO WIDTH x 82 1/2" HIGH	
R.O. POCKET DOOR (2x DOOR WIDTH + 1") x 85" HIGH	

* - DENOTES OPENING MEETS EGRESS REQUIREMENTS

9'-0" FIRST FLOOR CEILING HEIGHT (I-16)	
INCLUDES:	
1.	4 1/4" BASEBOARDS IN LIEU OF 3 1/4"
2.	3060 WINDOWS IN LIEU OF 3056 WINDOWS
3.	3056 WINDOWS IN LIEU OF 3049 WINDOWS
4.	DRYWALL WRAPPED OPENINGS 12" TALLER
5.	42" KITCHEN CABINETS (I-20)
6.	16'x7' GARAGE DOOR STANDARD



1'-0" HIGH BRICK LEDGE AROUND PERIMETER OF HOUSE (SEE ELEVATION FOR DETAILS)

ALL WALL DIMENSIONS ARE FACE TO FACE OF STUDS
ALL INTERIOR WALLS ARE 3 1/2" (UNLESS NOTED)
EXHAUST BATH FANS ARE VENTED TO OUTSIDE AIR
3049 SASH (5.10 SQ.FT. OF CLEAR OPENING)
ALL BRICK LAYOUT MEASUREMENTS ARE 4"

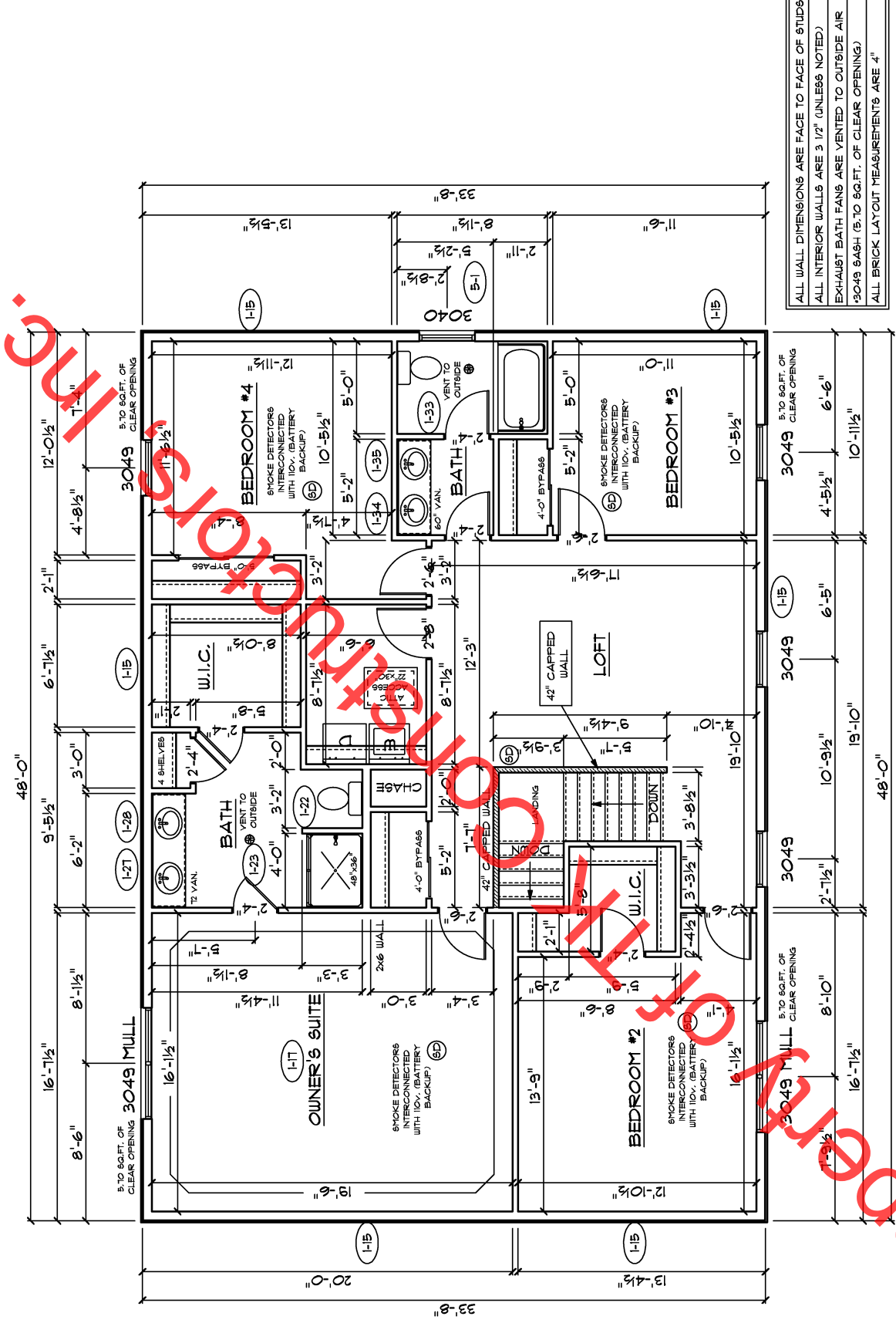


SECOND FLOOR PLAN

FIRST FLOOR SQ.FT.	1,180
SECOND FLOOR SQ.FT.	1,616
TOTAL LIVING SQ.FT.	2,796
GARAGE	532
TOTAL SQ.FT.	3,328
EXCLUDING PORCH	95

ANDERSEN WINDOW SCHEDULE - 200 SERIES -	
ANDERSEN MODEL NO.	R.O. SIZE
3030	36" x 36"
3040	36" x 48"
3049*	36" x 51"
3056*	36" x 66"
3060*	36" x 72"
3049 MULL*	73" x 51"
3056 MULL*	73" x 66"
3060 MULL*	73" x 72"
ANDERSEN SLIDING DOOR R.O. 72 3/4" x 82 1/8"	
3'-0" FRONT DOOR R.O. 36 3/8" x 82 1/2"	
3'-0" FRONT DOOR WITH (1) SIDELITE R.O. 51 1/8" x 82 1/2"	
3'-0" FRONT DOOR WITH (2) SIDELITES R.O. 65 3/8" x 82 1/2"	
R.O. FOR BI-FOLD DOORS USING DRYWALL JAMB FACING = 1 1/4" + DOOR SIZE x (81 1/2")	
R.O. FOR BYPASS DOORS USING DRYWALL JAMB FACING MAKE SAME AS BOTH DOORS ADDED TOGETHER	
ALL INTERIOR DOORS SIZE + 2" TO WIDTH x 82 1/2" HIGH	
R.O. POCKET DOOR (2x DOOR WIDTH + 1") x 85" HIGH	

* - DENOTES OPENING MEETS
EGRESS REQUIREMENTS



ALL WALL DIMENSIONS ARE FACE TO FACE OF STUDS
 ALL INTERIOR WALLS ARE 3 1/2" (UNLESS NOTED)
 EXHAUST BATH FANS ARE VENTED TO OUTSIDE AIR
 *3049 6ASH (5.70 SQ.FT. OF CLEAR OPENING)
 ALL BRICK LAYOUT MEASUREMENTS ARE 4"

1'-0" HIGH BRICK LEDGE
 AROUND PERIMETER OF HOUSE
 (SEE ELEVATION FOR DETAILS)

Proposed