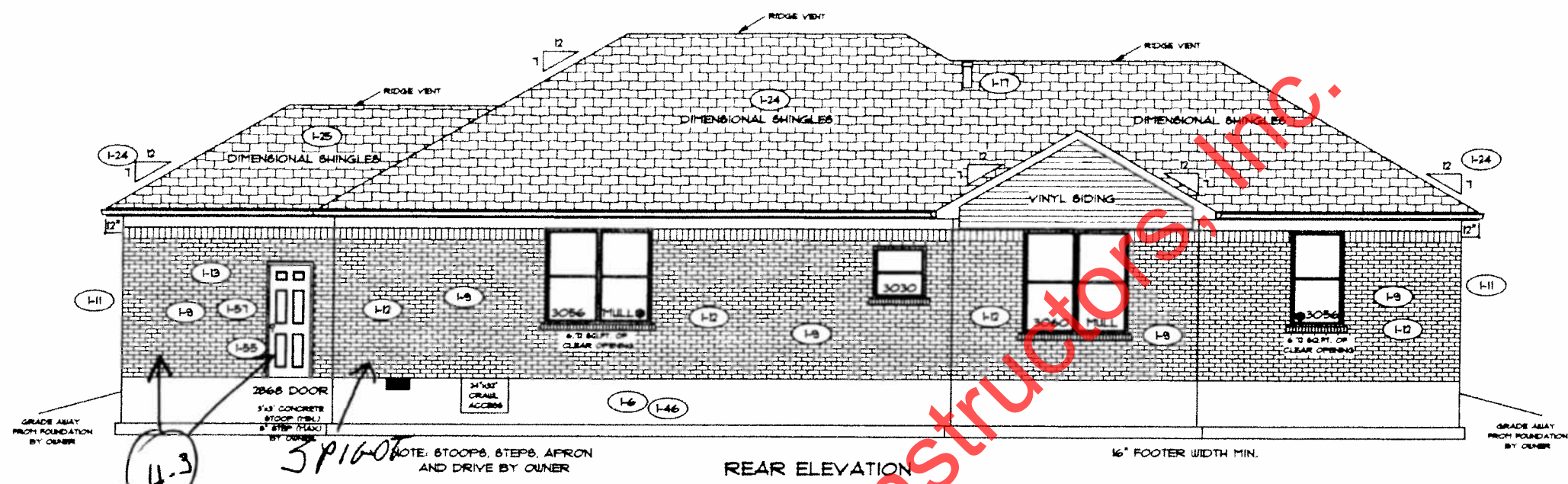


4-8
Knock Down
Ceilings



4-3
SP1607

SP1607

ADDRESS
Block

PAGE NO: 10

ADDDUM 1

VER: 092112

DRAWING BY: SES

1/8" = 1'

DATE: October 30, 2013

JOB NO: 115-13-0018

TK CONSTRUCTORS

MEMPHIS

ML

FLOOR PLAN

TOTAL LIVING SQ.FT.	2,011
GARAGE	802
TOTAL SQ.FT.	2,813
EXCLUDING PORCH	132

ANDERSEN WINDOW SCHEDULE - 200 SERIES -

ANDERSEN MODEL NO.	R.O. SIZE
3030	36" x 36"
3040	36" x 48"
3049*	36" x 51"
3056*	36" x 66"
3060*	36" x 72"
3049 MULL*	73" x 51"
3056 MULL*	73" x 66"
3060 MULL*	73" x 72"

ANDERSEN SLIDING DOOR
R.O. 72 3/4" x 82 1/8"

3'-0" FRONT DOOR
R.O. 38 3/8" x 82 1/2"

3'-0" FRONT DOOR WITH (1) SIDELITE
R.O. 51 1/8" x 82 1/2"

3'-0" FRONT DOOR WITH (2) SIDELITES
R.O. 63 3/8" x 82 1/2"

R.O. FOR BI-FOLD DOORS USING DRYWALL
JAMB FACING = 1 1/4" + DOOR SIZE x (81 1/2")

R.O. FOR BYPASS DOORS USING DRYWALL
JAMB FACING MAKE SAME AS BOTH DOORS
ADDED TOGETHER

ALL INTERIOR DOORS
SIZE + 2" TO WIDTH x 82 1/2" HIGH

R.O. POCKET DOOR
(2x DOOR WIDTH + 1") x 85" HIGH

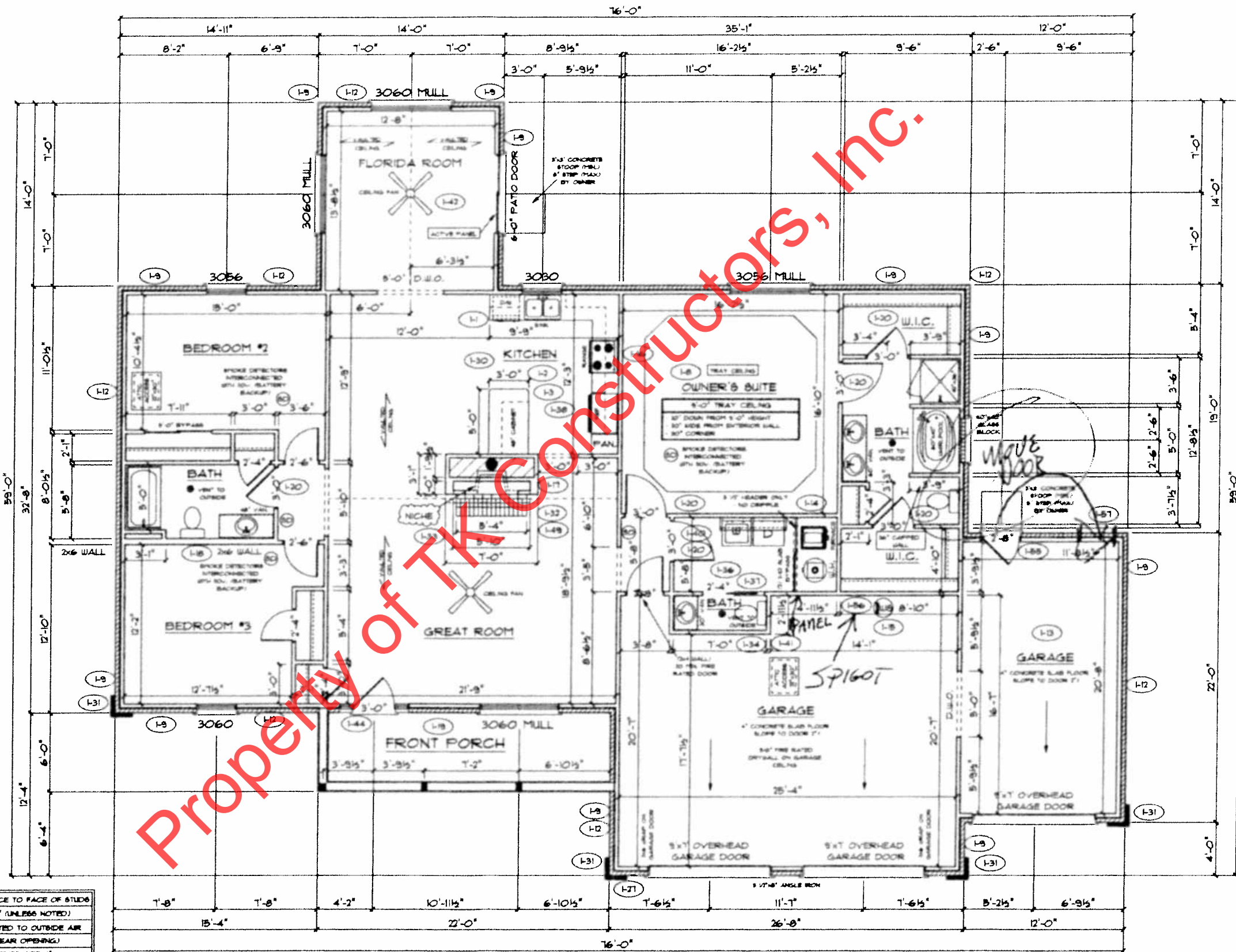
.. DENOTES OPENING MEETS
EGRESS REQUIREMENTS

**9'-0" FIRST FLOOR
CEILING HEIGHT (H1)**

INCLUDES:

- 4 1/4" BASEBOARDS IN LIEU OF 3 1/4"
- 3060 WINDOW IN LIEU OF 3056 WINDOW
- 3056 WINDOW IN LIEU OF 3049 WINDOW
- DRYWALL WRAPPED OPENINGS 12" TALLER
- 30" KITCHEN CABINETS STANDARD
- 16'x1' GARAGE DOOR STANDARD

ALL WALL DIMENSIONS ARE FACE TO FACE OF STUDS
ALL INTERIOR WALLS ARE 5/8" (UNLESS NOTED)
EXHAUST BATH FANS ARE VENTED TO OUTSIDE AIR
3049 SASH IS 10 SQ.FT. OF CLEAR OPENING
ALL BRICK LAYOUT MEASUREMENTS ARE 4"



MPR