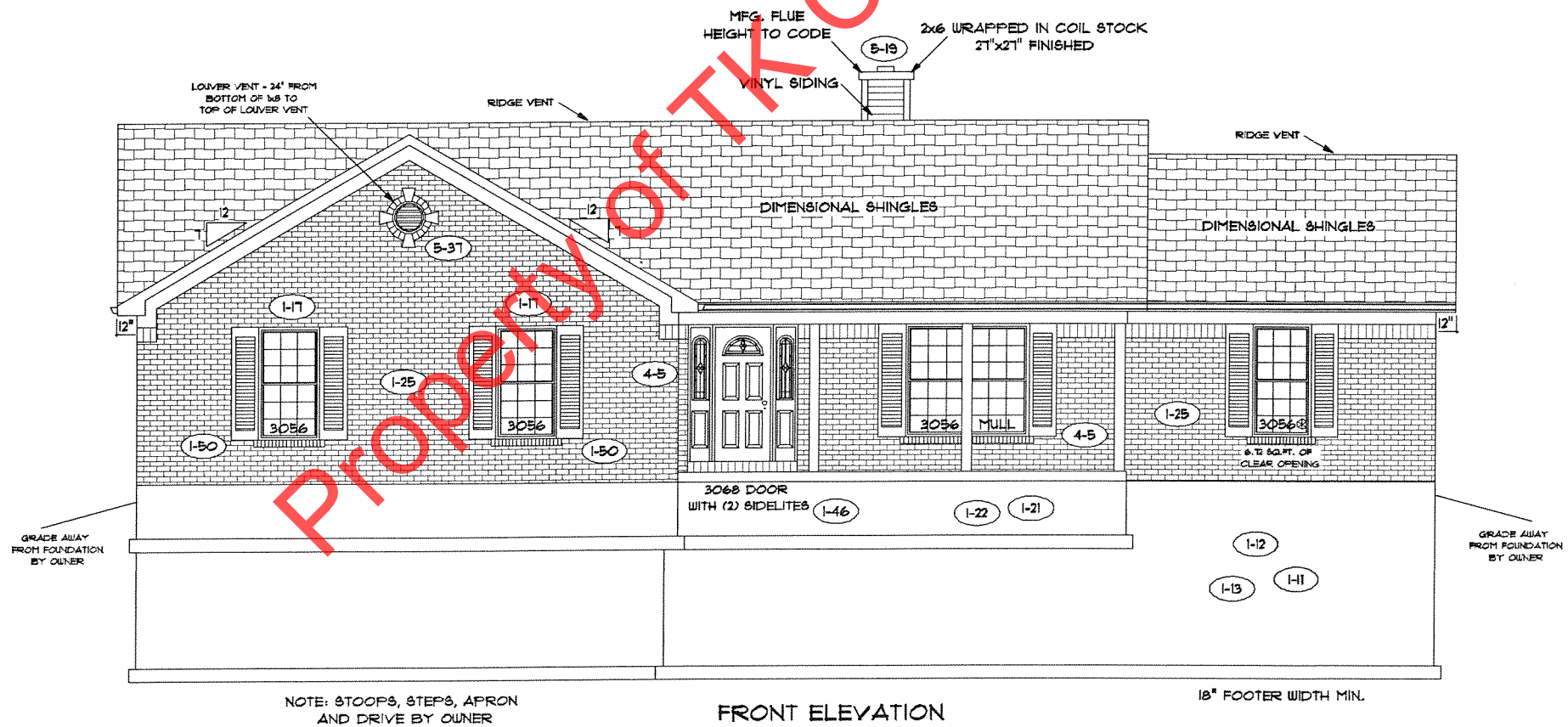


REAR ELEVATION

NOTE: STOOPS, STEPS, APRON AND DRIVE BY OWNER



FRONT ELEVATION

NOTE: STOOPS, STEPS, APRON AND DRIVE BY OWNER



OWNER TO SUPPLY ALL
SHELVING, MIRRORS, SHOWER,
TOILETS, MASTER AND HALL
BATH VANITIES AND TOPS.

FLOOR PLAN

TOTAL LIVING SQ.FT.	2,195
GARAGE	666
TOTAL SQ.FT.	2,861
EXCLUDING PORCH	176

ANDERSEN WINDOW SCHEDULE
- 200 SERIES - (149)

ANDERSEN MODEL NO.	R.O. SIZE
3030	36" x 36"
3040	36" x 48"
3049*	36" x 51"
3056*	36" x 66"
3060*	36" x 72"
3049 MULL*	73" x 51"
3056 MULL*	73" x 66"
3060 MULL*	73" x 72"

ANDERSEN SLIDING DOOR R.O. 72 3/4" x 82 7/8"
3'-0" FRONT DOOR R.O. 38 3/8" x 82 1/2"
3'-0" FRONT DOOR WITH (1) SIDELITE R.O. 51 7/8" x 82 1/2"
3'-0" FRONT DOOR WITH (2) SIDELITES R.O. 65 3/8" x 82 1/2"
R.O. FOR BI-FOLD DOORS USING DRYWALL JAMB FACING = 1/4" + DOOR SIZE
R.O. FOR BYPASS DOORS USING DRYWALL JAMB FACING MAKE SAME AS BOTH DOORS ADDED TOGETHER
ALL INTERIOR DOORS SIZE + 2" TO WIDTH x 82 1/2" HIGH
R.O. POCKET DOOR (2x DOOR WIDTH + 1") x 85" HIGH

* - DENOTES OPENING MEETS
EGRESS REQUIREMENTS

ALL WALL DIMENSIONS ARE FACE TO FACE OF STUDS
ALL INTERIOR WALLS ARE 3/2" (UNLESS NOTED)
EXHAUST BATH FANS ARE VENTED TO OUTSIDE AIR
(3049 BASH (5.70 SQ.FT. OF CLEAR OPENING)
ALL BRICK LAYOUT MEASUREMENTS ARE 4"

