



18" FOOTER WIDTH MIN. SIZE

FRONT ELEVATION

NOTE: STOOPS, STEPS, APRON AND DRIVE BY OWNER

PROPERTY OF TK CONSTRUCTORS, INC



FIRST FLOOR PLAN

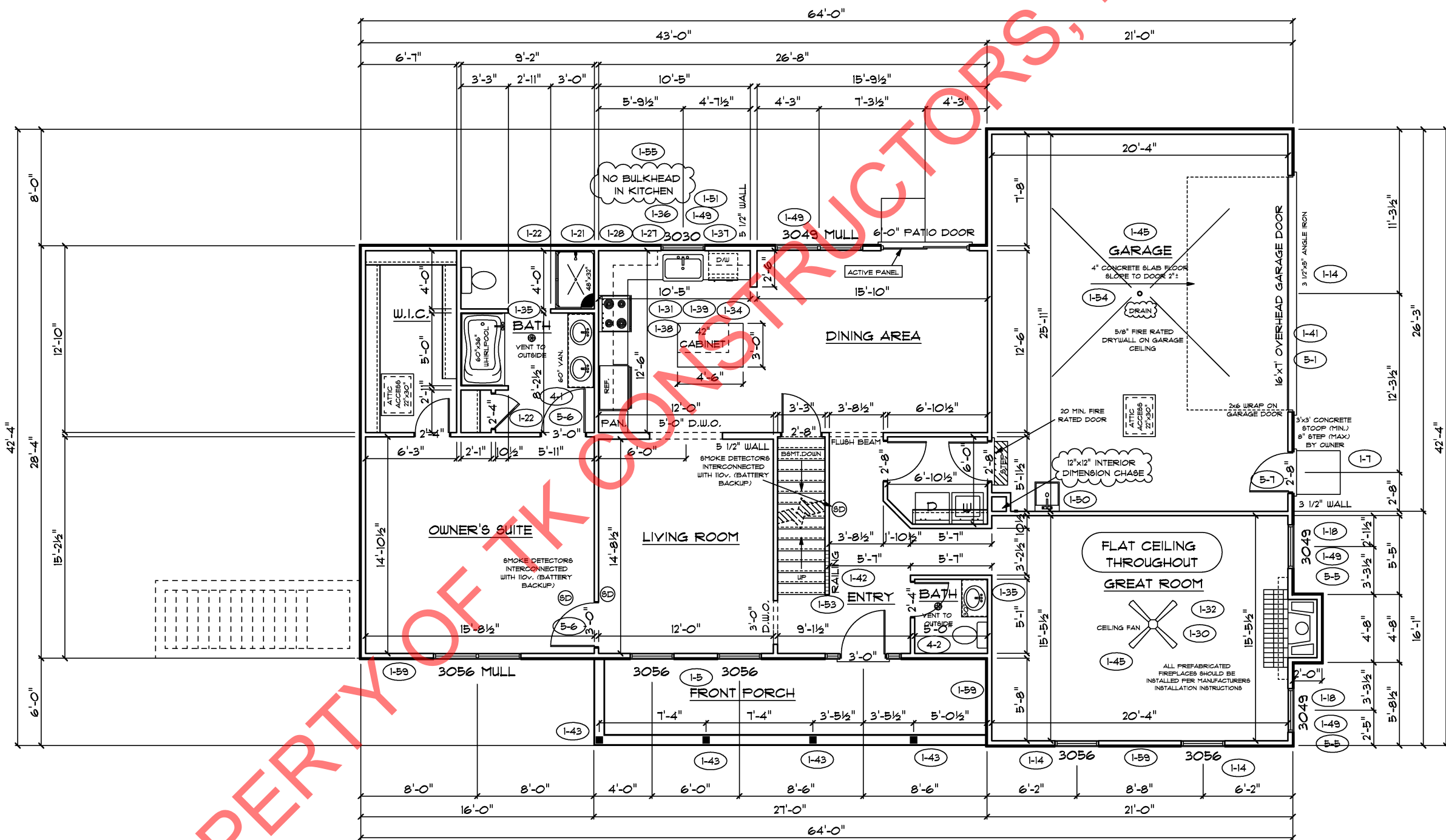
ANDERSEN WINDOW SCHEDULE
- 200 SERIES - (1-40) (5-2)

ANDERSEN MODEL NO.	R.O. SIZE
3030	36" x 36"
3040	36" x 48"
3049*	36" x 57"
3056*	36" x 66"
3060*	36" x 72"
3049 MULL*	73" x 57"
3056 MULL*	73" x 66"
3060 MULL*	73" x 72"

ANDERSEN SLIDING DOOR R.O. 12 3/4" x 82 1/8"
3'-0" FRONT DOOR R.O. 38 3/8" x 82 1/2"
3'-0" FRONT DOOR WITH (1) SIDELITE R.O. 51 7/8" x 82 1/2"
3'-0" FRONT DOOR WITH (2) SIDELITES R.O. 65 3/8" x 82 1/2"
R.O. FOR BI-FOLD DOORS USING DRYWALL JAMB FACING = 1 1/4" + DOOR SIZE x (81 1/2")
R.O. FOR BYPASS DOORS USING DRYWALL JAMB FACING MAKE SAME AS BOTH DOORS ADDED TOGETHER
ALL INTERIOR DOORS SIZE + 2" TO WIDTH x 82 1/2" HIGH
R.O. POCKET DOOR (2x DOOR WIDTH + 1") x 85" HIGH

* - DENOTES OPENING MEETS
EGRESS REQUIREMENTS

ALL WALL DIMENSIONS ARE FACE TO FACE OF STUDS
ALL INTERIOR WALLS ARE 3/2" (UNLESS NOTED)
EXHAUST BATH FANS ARE VENTED TO OUTSIDE AIR
*3049 SASH (8.70 SQ.FT. OF CLEAR OPENING)
ALL BRICK LAYOUT MEASUREMENTS ARE 4"



PAGE NO: **4B**

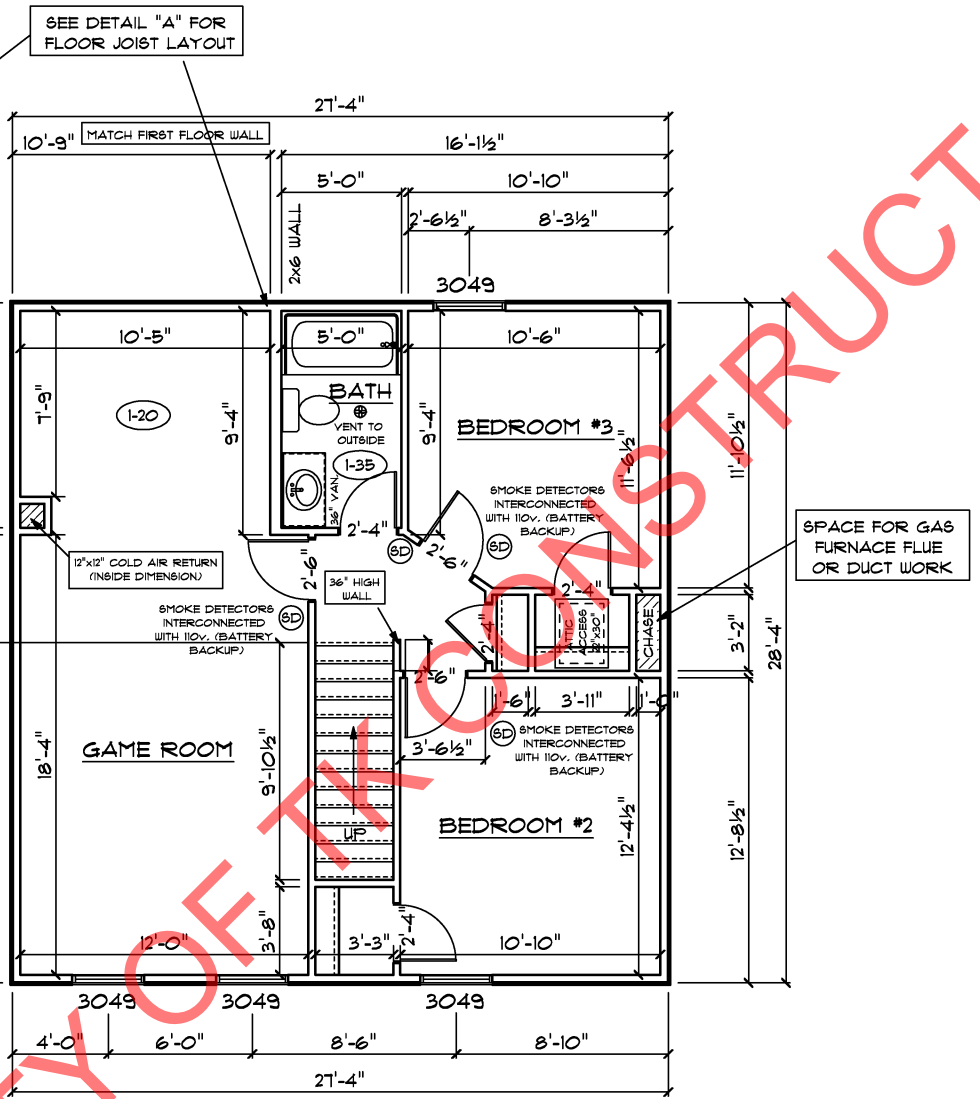
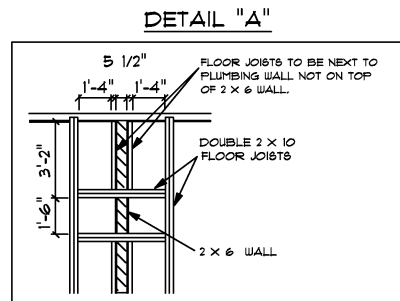
ADDENDUM 1, 4, 5
10:12 AM
DRAWING BY: SES, GW
1/8" = 1'

TK CONSTRUCTORS

DATE: May 19, 2015
JOB NO: 216-15-0013

JACKSON

PROPERTY OF TK CONSTRUCTORS, INC



ALL WALL DIMENSIONS ARE FACE TO FACE OF STUDS
 ALL INTERIOR WALLS ARE 3 1/2" (UNLESS NOTED)
 EXHAUST BATH FANS ARE VENTED TO OUTSIDE AIR
 3049 SASH (5.70 SQ.FT. OF CLEAR OPENING)
 ALL BRICK LAYOUT MEASUREMENTS ARE 4"

FIRST FLOOR SQ.FT.	1,562
SECOND FLOOR SQ.FT.	774
TOTAL LIVING SQ.FT.	2,336
GARAGE	545
TOTAL SQ.FT.	2,881
EXCLUDING PORCH	162

ANDERSEN WINDOW SCHEDULE - 200 SERIES -

ANDERSEN MODEL NO.	R.O. SIZE
3030	36" x 36"
3040	36" x 48"
3049*	36" x 57"
3056*	36" x 66"
3060*	36" x 72"
3049 MULL*	73" x 57"
3056 MULL*	73" x 66"
3060 MULL*	73" x 72"

ANDERSEN SLIDING DOOR
 R.O. 72 3/4" x 82 1/8"

3'-0" FRONT DOOR
 R.O. 38 3/8" x 82 1/2"

3'-0" FRONT DOOR WITH (1) SIDELITE
 R.O. 51 7/8" x 82 1/2"

3'-0" FRONT DOOR WITH (2) SIDELITES
 R.O. 65 3/8" x 82 1/2"

R.O. FOR BI-FOLD DOORS USING DRYWALL
 JAMB FACING = 1 1/4" + DOOR SIZE x (81 1/2")

R.O. FOR BYPASS DOORS USING DRYWALL
 JAMB FACING MAKE SAME AS BOTH DOORS
 ADDED TOGETHER

ALL INTERIOR DOORS
 SIZE + 2" TO WIDTH x 82 1/2" HIGH

R.O. POCKET DOOR
 (2x DOOR WIDTH + 1") x 85" HIGH

* - DENOTES OPENING MEETS
 EGRESS REQUIREMENTS