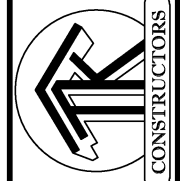


PROPERTY OF TK CONSTRUCTORS, INC

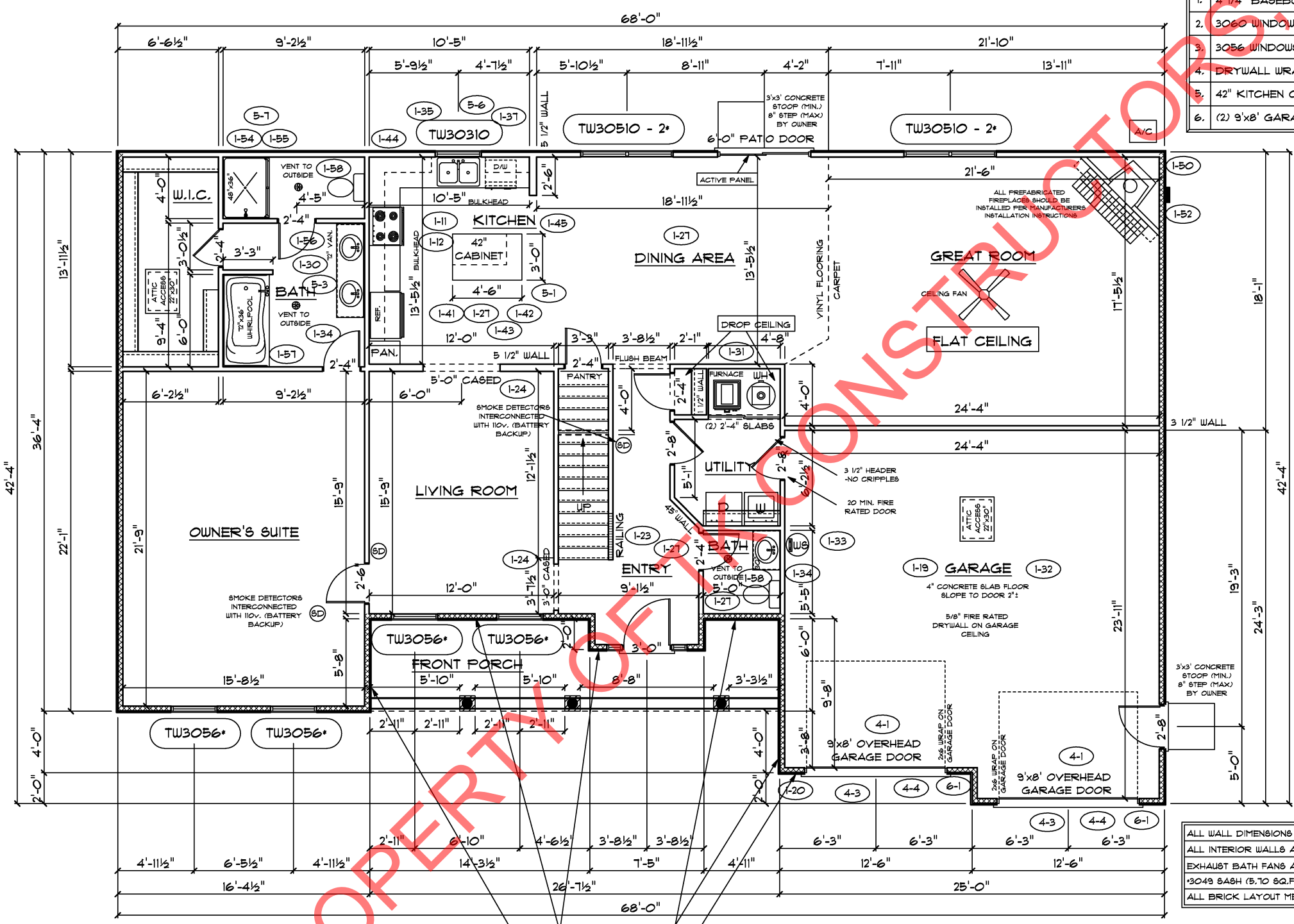




9'-0" FIRST FLOOR CEILING HEIGHT
4-2

INCLUDES:

- 4 1/4" BASEBOARDS IN LIEU OF 3 1/4"
- 3060 WINDOWS IN LIEU OF 3056 WINDOWS
- 3056 WINDOWS IN LIEU OF 3049 WINDOWS
- DRYWALL WRAPPED OPENINGS 12" TALLER
- 42" KITCHEN CABINETS
- (2) 9'x8' GARAGE DOORS 4-3



FIRST FLOOR PLAN

ANDERSEN WINDOW SCHEDULE - 400 SERIES -

ANDERSEN MODEL NO.	R.O. SIZE
TW30210	38 1/8" x 36 7/8"
TW30310	38 1/8" x 48 7/8"
TW3046*	38 1/8" x 56 7/8"
TW3056*	38 1/8" x 68 7/8"
TW30510*	38 1/8" x 72 7/8"
TW3046-2*	76 3/4" x 56 7/8"
TW3056-2*	76 3/4" x 68 7/8"
TW30510 - 2*	76 3/4" x 72 7/8"

ANDERSEN SLIDING DOOR
R.O. 72 3/4" x 82 7/8"

3'-0" FRONT DOOR
R.O. 38 3/8" x 82 1/2"

3'-0" FRONT DOOR WITH (1) SIDELITE
R.O. 51 7/8" x 82 1/2"

3'-0" FRONT DOOR WITH (2) SIDELITES
R.O. 65 3/8" x 82 1/2"

R.O. FOR BI-FOLD DOORS USING DRYWALL JAMB FACING = 1 1/4" + DOOR SIZE x (81 1/2")

R.O. FOR BYPASS DOORS USING DRYWALL JAMB FACING MAKE SAME AS BOTH DOORS ADDED TOGETHER

ALL INTERIOR DOORS
SIZE + 2" TO WIDTH x 82 1/2" HIGH

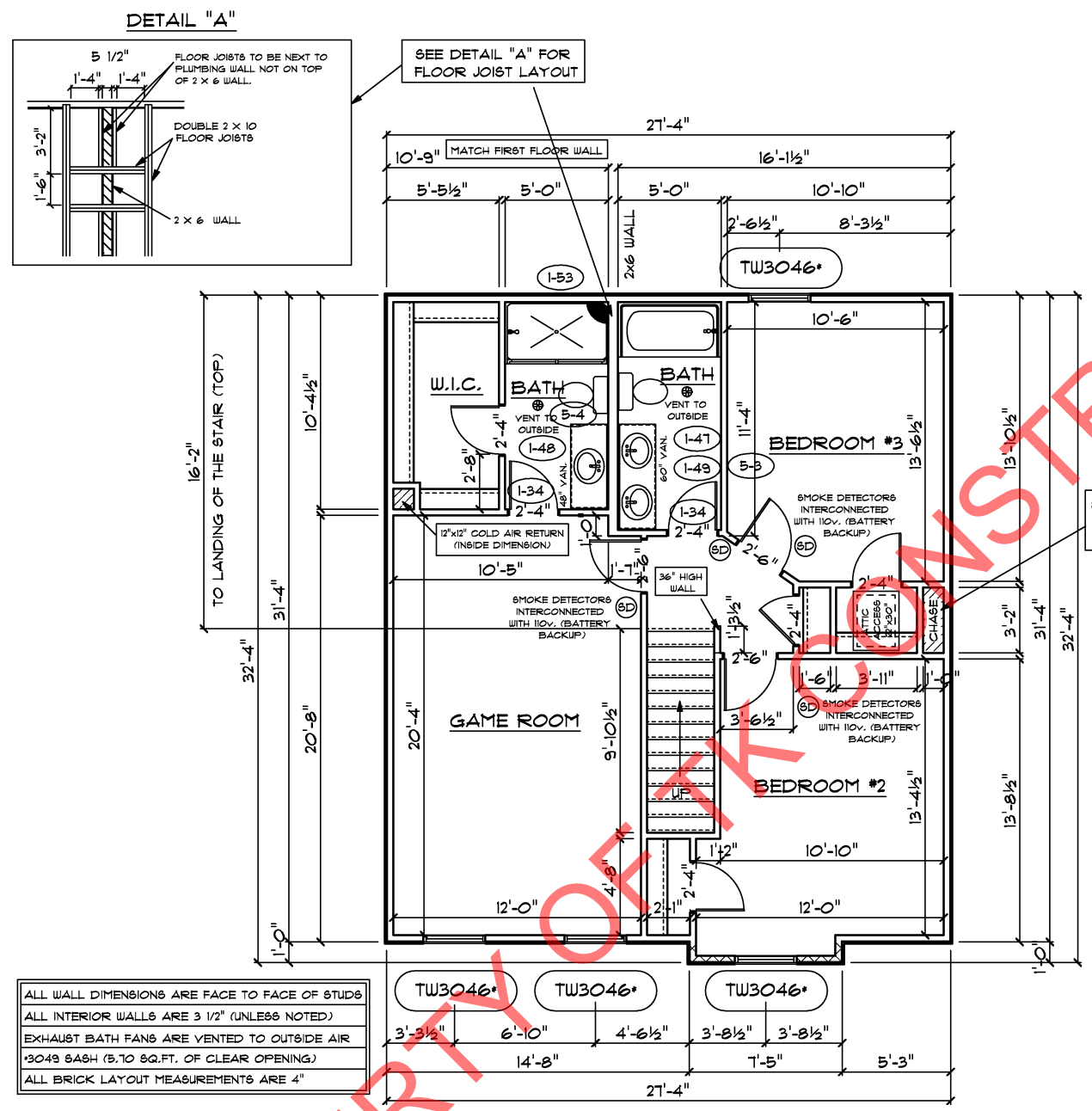
R.O. POCKET DOOR
(2x DOOR WIDTH + 1") x 85" HIGH

* - DENOTES OPENING MEETS EGRESS REQUIREMENTS

ALL WALL DIMENSIONS ARE FACE TO FACE OF STUDS
ALL INTERIOR WALLS ARE 3 1/2" (UNLESS NOTED)
EXHAUST BATH FANS ARE VENTED TO OUTSIDE AIR
3049 SASH (5.70 SQ.FT. OF CLEAR OPENING)
ALL BRICK LAYOUT MEASUREMENTS ARE 4"

PROPERTY

STONE TO SILL HEIGHT



SECOND FLOOR PLAN

FIRST FLOOR SQ.FT.	1,883
SECOND FLOOR SQ.FT.	869
TOTAL LIVING SQ.FT.	2,752
GARAGE	582
TOTAL SQ.FT.	3,334
EXCLUDING PORCH	145

ANDERSEN WINDOW SCHEDULE - 400 SERIES -

ANDERSEN MODEL NO.	R.O. SIZE
TW30210	38 1/8" x 36 7/8"
TW30310	38 1/8" x 48 7/8"
TW3046*	38 1/8" x 56 7/8"
TW3056*	38 1/8" x 68 7/8"
TW30510*	38 1/8" x 72 7/8"
TW3046 -2*	76 1/8" x 56 7/8"
TW3056 -2*	76 1/8" x 68 7/8"
TW30510 - 2*	76 1/8" x 72 7/8"

ANDERSEN SLIDING DOOR
R.O. 72 3/4" x 82 7/8"

3'-0" FRONT DOOR
R.O. 38 3/8" x 82 1/2"

3'-0" FRONT DOOR WITH (1) SIDELITE
R.O. 51 7/8" x 82 1/2"

3'-0" FRONT DOOR WITH (2) SIDELITES
R.O. 65 3/8" x 82 1/2"

R.O. FOR BI-FOLD DOORS USING DRYWALL JAMB FACING = 1 1/4" + DOOR SIZE x (81 1/2")

R.O. FOR BYPASS DOORS USING DRYWALL JAMB FACING MAKE SAME AS BOTH DOORS ADDED TOGETHER

ALL INTERIOR DOORS
SIZE + 2" TO WIDTH x 82 1/2" HIGH

R.O. POCKET DOOR
(2x DOOR WIDTH + 1") x 85" HIGH

* - DENOTES OPENING MEETS EGRESS REQUIREMENTS

ALL WALL DIMENSIONS ARE FACE TO FACE OF STUDS
ALL INTERIOR WALLS ARE 3 1/2" (UNLESS NOTED)
EXHAUST BATH FANS ARE VENTED TO OUTSIDE AIR
13049 SASH (5.70 SQ.FT. OF CLEAR OPENING)
ALL BRICK LAYOUT MEASUREMENTS ARE 4"

PROPERTY OF TK CONSTRUCTORS, INC