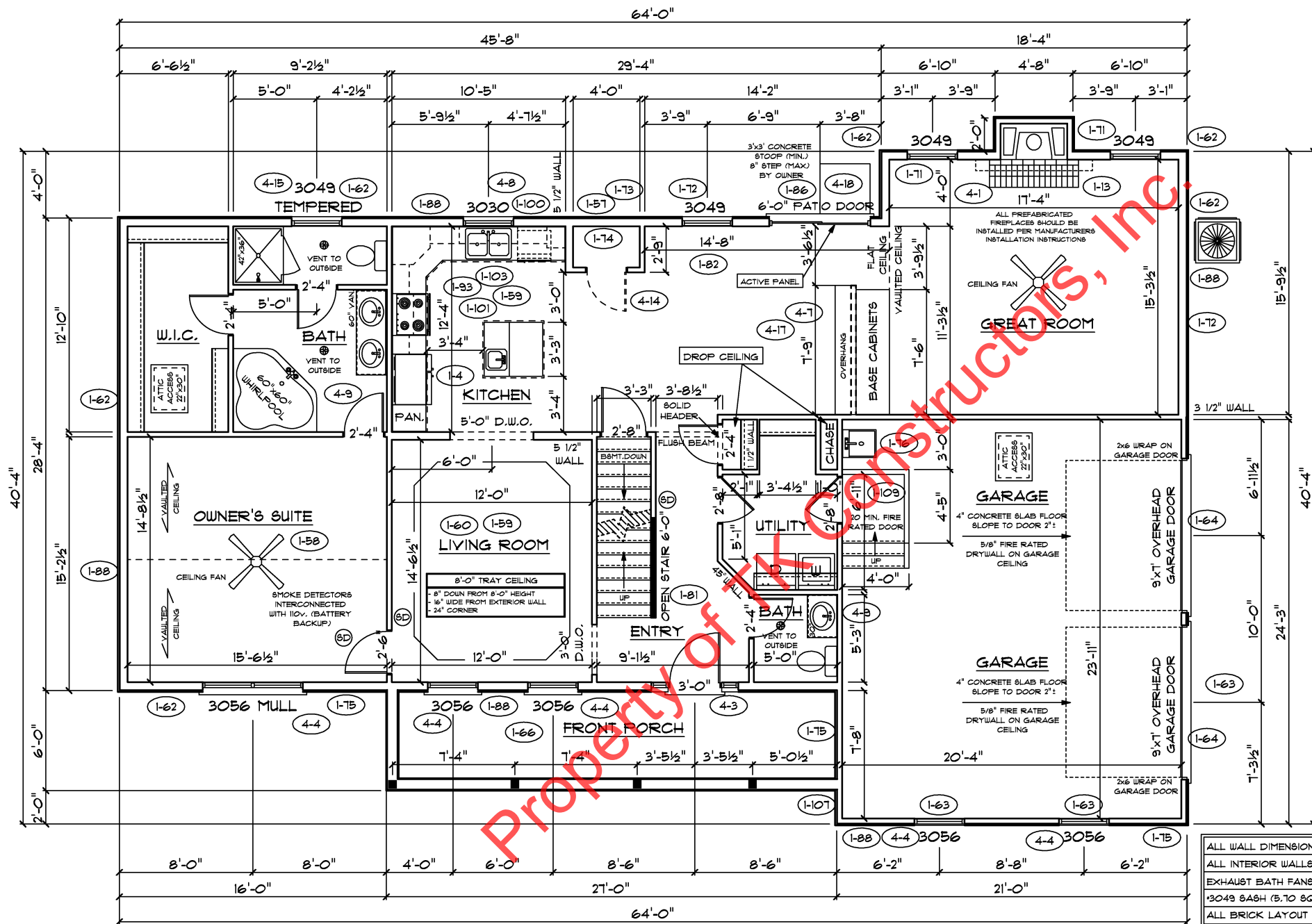


FRONT ELEVATION





FIRST FLOOR PLAN

**ANDERSEN WINDOW SCHEDULE**  
 1-54 - 200 SERIES - 1-55

ANDERSEN MODEL NO.	R.O. SIZE
3030	36" x 36"
3040	36" x 48"
3049*	36" x 51"
3056*	36" x 66"
3060*	36" x 72"
3049 MULL*	73" x 51"
3056 MULL*	73" x 66"
3060 MULL*	73" x 72"

ANDERSEN SLIDING DOOR  
 R.O. 72 3/4" x 82 1/8"

3'-0" FRONT DOOR  
 R.O. 38 3/8" x 82 1/2"

3'-0" FRONT DOOR WITH (1) SIDELITE  
 R.O. 51 7/8" x 82 1/2"

3'-0" FRONT DOOR WITH (2) SIDELITES  
 R.O. 65 3/8" x 82 1/2"

R.O. FOR BI-FOLD DOORS USING DRYWALL  
 JAMB FACING = 1 1/4" + DOOR SIZE x (81 1/2")

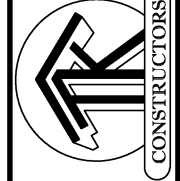
R.O. FOR BYPASS DOORS USING DRYWALL  
 JAMB FACING MAKE SAME AS BOTH DOORS  
 ADDED TOGETHER

ALL INTERIOR DOORS  
 SIZE + 2" TO WIDTH x 82 1/2" HIGH

R.O. POCKET DOOR  
 (2x DOOR WIDTH + 1") x 85" HIGH

\* - DENOTES OPENING MEETS  
 EGRESS REQUIREMENTS

ALL WALL DIMENSIONS ARE FACE TO FACE OF STUDS  
 ALL INTERIOR WALLS ARE 3 1/2" (UNLESS NOTED)  
 EXHAUST BATH FANS ARE VENTED TO OUTSIDE AIR  
 \*3049 SASH (5.70 SQ.FT. OF CLEAR OPENING)  
 ALL BRICK LAYOUT MEASUREMENTS ARE 4"



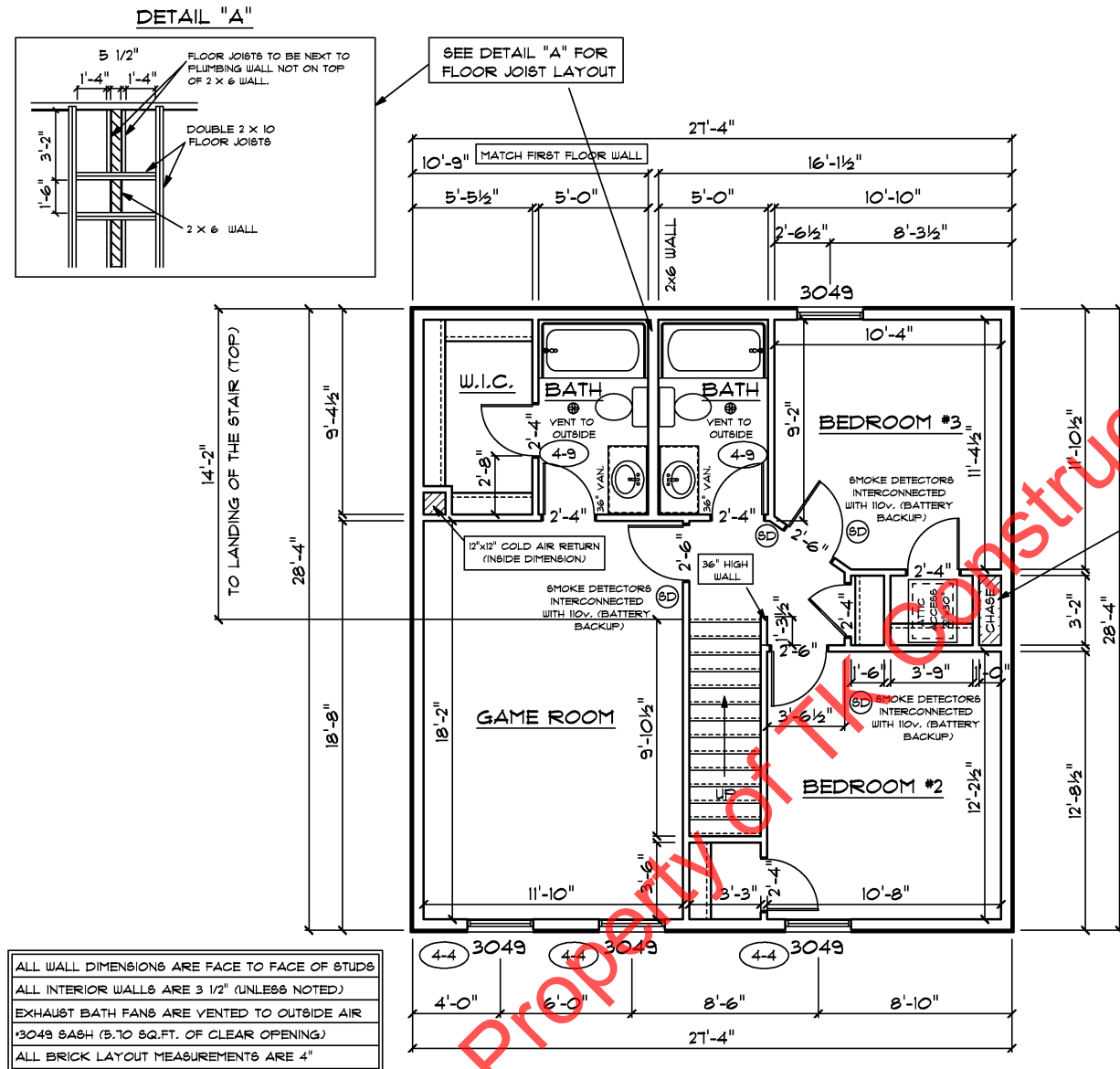


SECOND FLOOR PLAN

FIRST FLOOR SQ.FT.	1,550
SECOND FLOOR SQ.FT.	774
TOTAL LIVING SQ.FT.	2,324
GARAGE	506
TOTAL SQ.FT.	2,830
EXCLUDING PORCH	162

ANDERSEN WINDOW SCHEDULE - 200 SERIES - (4-5)	
ANDERSEN MODEL NO.	R.O. SIZE
3030	36" x 36"
3040	36" x 48"
3049*	36" x 51"
3056*	36" x 66"
3060*	36" x 72"
3049 MULL*	73" x 51"
3056 MULL*	73" x 66"
3060 MULL*	73" x 72"
ANDERSEN SLIDING DOOR R.O. 72 3/4" x 82 1/8"	
3'-0" FRONT DOOR R.O. 38 3/8" x 82 1/2"	
3'-0" FRONT DOOR WITH (1) SIDELITE R.O. 51 7/8" x 82 1/2"	
3'-0" FRONT DOOR WITH (2) SIDELITES R.O. 65 3/8" x 82 1/2"	
R.O. FOR BI-FOLD DOORS USING DRYWALL JAMB FACING + 1 1/4" + DOOR SIZE x (81 1/2")	
R.O. FOR BYPASS DOORS USING DRYWALL JAMB FACING MAKE SAME AS BOTH DOORS ADDED TOGETHER	
ALL INTERIOR DOORS SIZE + 2" TO WIDTH x 82 1/2" HIGH	
R.O. POCKET DOOR (2x DOOR WIDTH + 1") x 85" HIGH	

\* - DENOTES OPENING MEETS  
EGRESS REQUIREMENTS



ALL WALL DIMENSIONS ARE FACE TO FACE OF STUDS  
ALL INTERIOR WALLS ARE 3 1/2" (UNLESS NOTED)  
EXHAUST BATH FANS ARE VENTED TO OUTSIDE AIR  
3049 SASH (5.70 SQ.FT. OF CLEAR OPENING)  
ALL BRICK LAYOUT MEASUREMENTS ARE 4"

SEE DETAIL "A" FOR  
FLOOR JOIST LAYOUT

SPACE FOR GAS  
FURNACE FLUE  
OR DUCT WORK