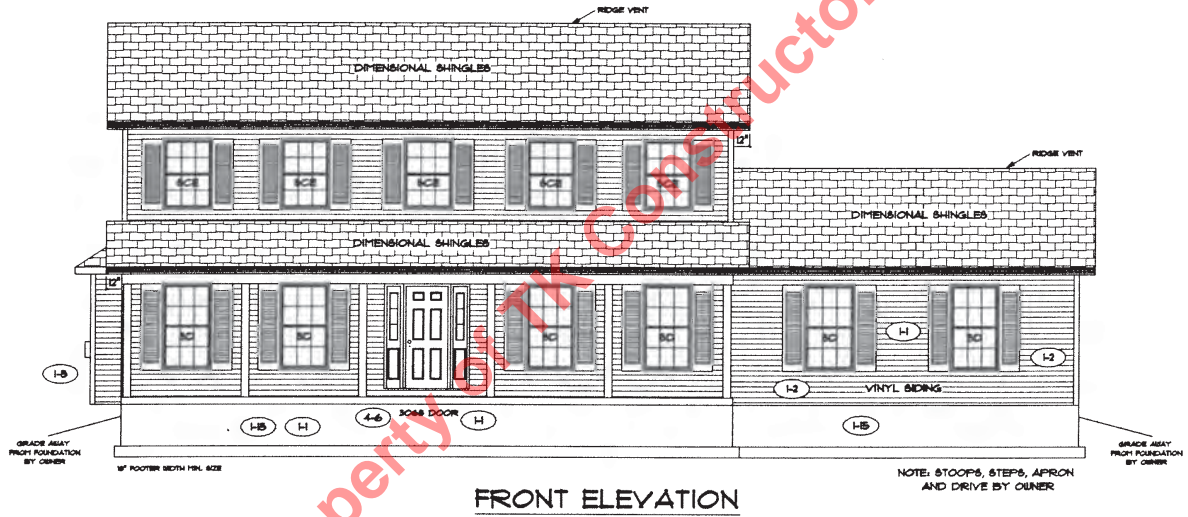



OPTIONS: SEE PAGE NO. 2



 TK CONSTRUCTORS	DATE: October 11, 2011	MODEL: CUSTOM	PAGE NO.: 1C
	1	VER:	
	JOB NO.: 112-11-0093	DRAWING BY: SBS	
		SCALE: 1/8" IN. = 1 FT.	

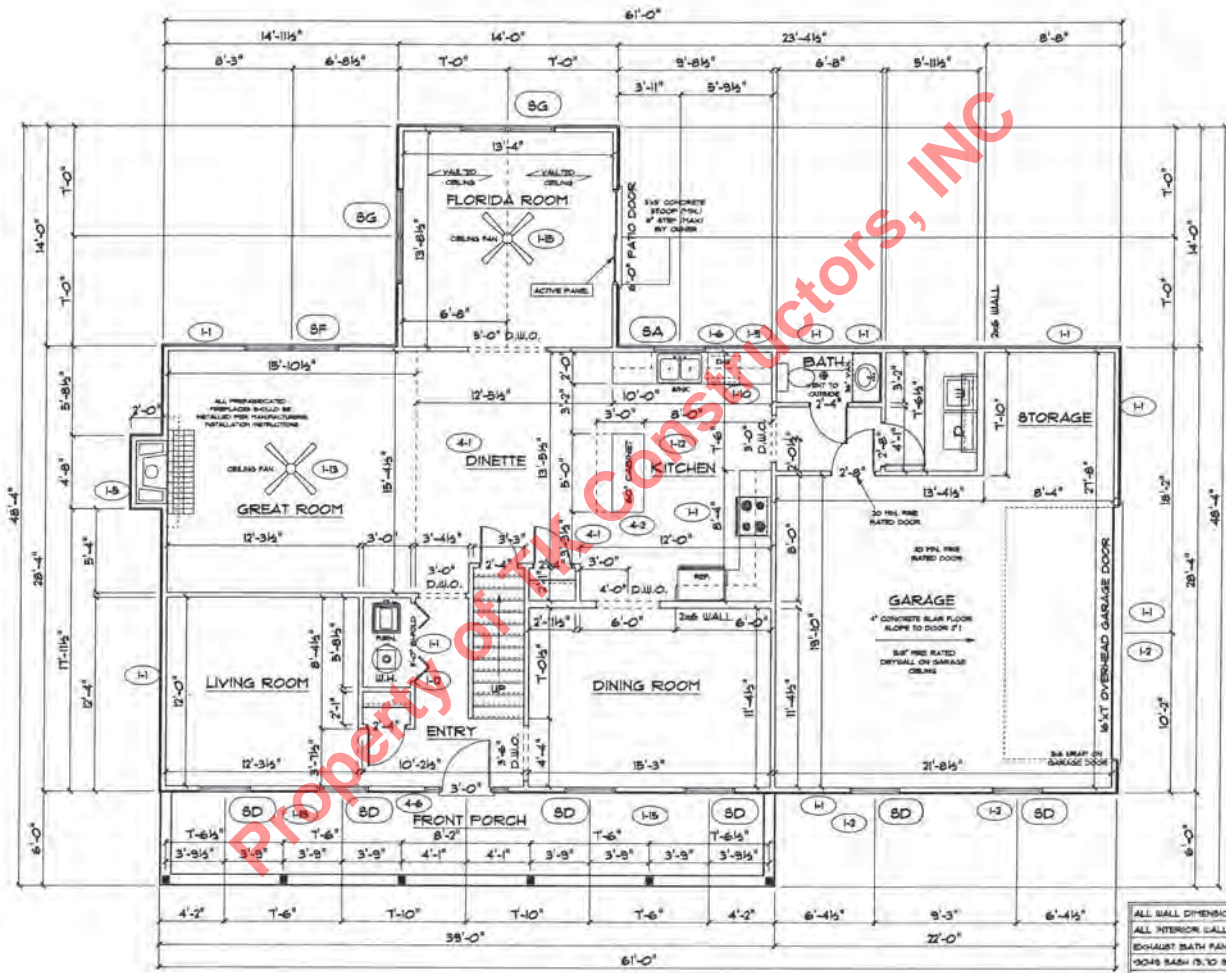
FIRST FLOOR PLAN

SILVERLINE WINDOW SCHEDULE
- TWO STORY PLAN - (H)

SYTL	SILVERLINE MODEL	R.O. SIZE	IN LIEU OF ANDERSEN
BA	3/2 x 3/0	38 1/2" x 36 1/2"	3030
BD	3/2 x 4/0	38 1/2" x 48 1/2"	3040
BC	3/0 x 4/6	38 1/4" x 51 1/4"	3048
HEIGHT RESTRICTED AREAS ONLY - 4/01 SERIES			
BC	3/2 x 5/0	38 1/2" x 60 1/2"	3048
BD	3/2 x 5/6	38 1/2" x 66 1/2"	3056
BE	3/2 x 6/0	38 1/2" x 72 1/2"	3060
BF	3/2 x 5/0 - 2	76" x 60 1/2"	3048 MULL
BG	3/2 x 5/6 - 2	76" x 66 1/2"	3056 MULL
BH	3/2 x 6/0 - 2	76" x 72 1/2"	3060 MULL

- SILVERLINE VINYL SLIDING 2 PANEL DOOR 80 x 68 - R.O. 72 1/8" x 80 1/2"
- 3'-0" FRONT DOOR
R.O. 38 3/8" x 82 1/2"
- 3'-0" FRONT DOOR WITH (1) SIDELITE
R.O. 51 7/8" x 82 1/2"
- 3'-0" FRONT DOOR WITH (2) SIDELITES
R.O. 65 3/8" x 82 1/2"
- R.O. FOR BI-FOLD DOORS USING DRYWALL JAMB FACING = 1/4" x DOOR SIZE
- R.O. FOR BYPASS DOORS USING DRYWALL JAMB FACING MAKE SAME AS BOTH DOORS ADDED TOGETHER
- ALL INTERIOR DOORS
SIZE: 2" TO WIDTH x 82 1/2" HIGH
- R.O. POCKET DOOR
(2) DOOR WIDTH x 7" x 82" HIGH

** DENOTES OPENING MEETS EGRESS REQUIREMENTS

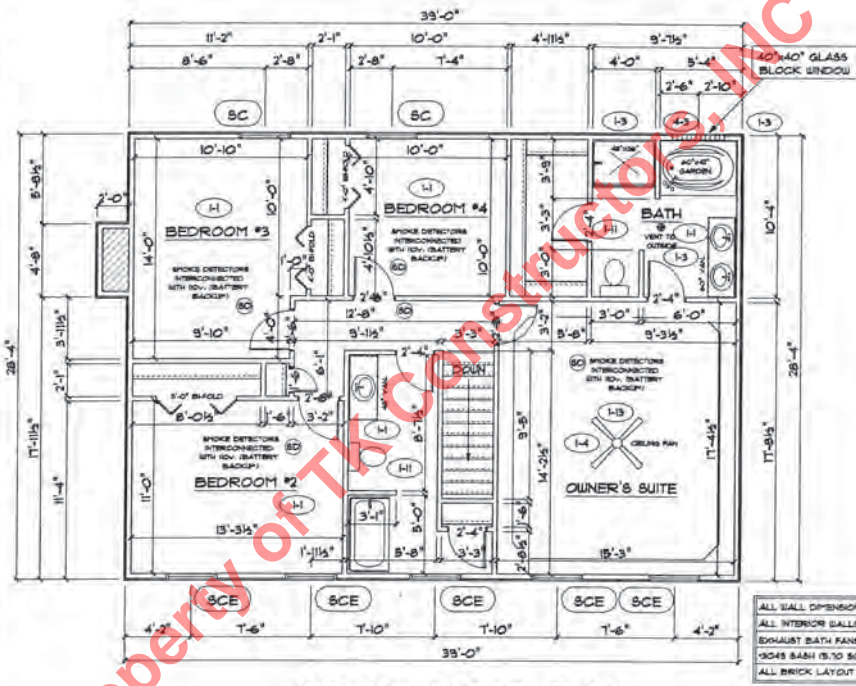


ALL WALL DIMENSIONS ARE FACE TO FACE OF STUDS
ALL INTERIOR WALLS ARE 5/8" UNLESS NOTED!
EXHAUST FANS ARE VENTED TO OUTSIDE AIR
DOORS MARK (2) TO MEAN 2" OF CLEAR OPENING
ALL BRICK LAYOUT MEASUREMENTS ARE 4"



FIRST FLOOR SQ.FT.	1,409
SECOND FLOOR SQ.FT.	1,074
TOTAL LIVING SQ.FT.	2,483
GARAGE	515
TOTAL SQ.FT.	2,998
EXCLUDING PORCH	234

SILVERLINE WINDOW SCHEDULE - TWO STORY PLAN - (H)			
SYTL	SILVERLINE MODEL	R.O. SIZE	IN LIBR OF ANDERSEN
8A	3/2 x 3/0	36 1/2" x 36 1/2"	3030
8B	3/2 x 4/0	38 1/2" x 48 1/2"	3040
8CE	5/0 x 4/6*	38 1/4" x 37 1/4"	3045
HEIGHT RESTRICTED AREAS ONLY - 4001 SERIES			
8C	3/2 x 5/0	38 1/2" x 60 1/2"	3045
8D	3/2 x 5/6*	38 1/2" x 66 1/2"	3056
8E	3/2 x 6/0*	38 1/2" x 72 1/2"	3060
8F	3/2 x 5/0 - 2	36" x 60 1/2"	3045 MULL
8G	3/2 x 5/6 - 2	36" x 66 1/2"	3056 MULL
8H	3/2 x 6/0 - 2	36" x 72 1/2"	3060 MULL
SILVERLINE VINYL SLIDING 2 PANEL DOOR 60 x 66 - R.O. 73 1/8" x 80 1/2"			
3'-0" FRONT DOOR R.O. 38 3/8" x 82 1/2"			
3'-0" FRONT DOOR WITH (1) SIDELITE R.O. 51 1/8" x 82 1/2"			
3'-0" FRONT DOOR WITH (2) SIDELITES R.O. 65 3/8" x 82 1/2"			
R.O. FOR BI-FOLD DOORS USING DRYWALL JAMB FACING = 1/4" + DOOR SIZE			
R.O. FOR BYPASS DOORS USING DRYWALL JAMB FACING MAKE SAME AS BOTH DOORS ADDED TOGETHER			
ALL INTERIOR DOORS SIZE = 2' TO WIDTH x 82 1/2" HIGH			
R.O. POCKET DOOR (24" DOOR WIDTH + 1") x 88" HIGH			
* - DENOTES OPENING MEETS EGRESS REQUIREMENTS			



SECOND FLOOR PLAN

ALL WALL DIMENSIONS ARE FACE TO FACE OF BRICK
 ALL INTERIOR WALLS ARE 3/2" UNLESS NOTED
 EXHAUST BATH FAN ARE VENTED TO OUTSIDE AIR
 DOORS BATH IS TO SOFT. OF CLEAR OPENING
 ALL BRICK LAYOUT MEASUREMENTS ARE 4"